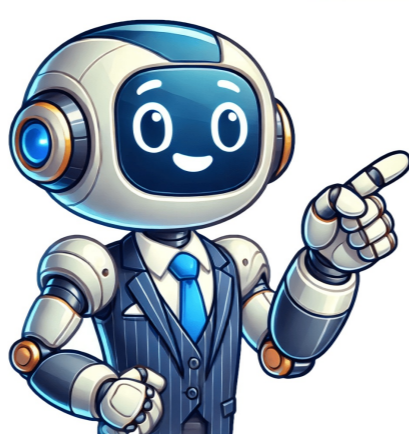


[Click Here](#)



Configure Sophos Firewall for Comprehensive Network Security ===== ### Step 1: Complete Initial Setup and Basic Configuration After initial setup using the setup assistant, configure the firewall by: * Configuring internet settings for the firewall, including selecting an IP assignment method for the WAN interface. * Assigning IP addresses to endpoints through DHCP. * Configuring DNS servers, ### Step 2: Set Up Servers and Endpoints Configure Sophos Firewall's server and endpoint settings by: * Setting up local or external authentication servers for users and groups. * Enabling multi-factor authentication (MFA) for added security. ### Step 3: Secure Administrator Access Secure administrator access to Sophos Firewall by: * Configuring a complex administrator password and changing the default admin password. * Using public key authentication for administrators. * Configuring sign-in security, including specifying inactivity periods and preventing brute force sign-in attacks. ### Step 4: Finalize Configuration and Go Live Finalize configuration and deploy Sophos Firewall to your network by: * Testing and validating the firewall before going live. * Deploying the firewall on a test network or in a lab first, then integrating it with your real network. * Performing acceptance testing and iterative tuning to finalize the configuration. ### Step 5: Add New Services Add new services to Sophos Firewall, including: * Reading about the new features offered by Sophos compared to previous vendors. * Completing any additional setup or configuration tasks as required. More resources can be utilized by adding any feature, service, or function needed to suit business requirements. Sophos XG Firewall is a next-gen firewall offering comprehensive protection against both known and unknown threats. It comprises various features such as web filtering, application control, intrusion prevention, and synchronized security. This Sophos XG Firewall training course will teach learners how to install, configure, and manage the firewall from scratch, equipping them with skills to protect their organization from security risks. Hands-on labs are included for practical experience with Sophos XG Firewall. Benefits of using Sophos XG Firewall include: * Comprehensive next-gen firewall protection * Unified user, application, and network control * Blocking unknown threats * All-in-one protection * On-box reports as standard * Patented Layer-8 Identity control * Powerful, fast, and potent Course goals: * Install and configure Sophos XG Firewall from scratch * Create and manage firewall policies * Configure web control and application control policies * Set up user authentication and captive portal * Implement synchronized security * Configure traffic shaping and SSO * Configure high availability * Configure IPS and anti-virus Prerequisites: * Basic understanding of IP security, Windows operating systems, and network administration Sophos Firewall provides comprehensive traffic processing from layer 2 to layer 7, offering protection across the higher layers of the network stack. If new to Sophos Firewall, follow these recommendations: 1. Secure administrator access * Configure a complex admin password or use public key authentication for administrators. * Set up sign-in security with an inactivity period and prevent brute force sign-in attacks. 2. Recommended settings: * Specify default settings such as automatic installation of hotfixes and device access to Sophos Firewall. When using the default admin password, restrictions apply: * Cannot use SCP in LAN and WAN zones * Prompt to change password when signing in through SSH from LAN zone * Forbidden error accessing web admin console from WAN zone You can gradually deploy Sophos Firewall into your live network by first configuring it with a different gateway IP address and testing its functionality. This staged approach allows you to minimize disruptions to daily operations. After validation, you can finalize the configuration by switching IP addresses or removing the old device. The new firewall offers various features compared to your previous vendor, so be sure to explore these details in the help resources. Once configured, add any additional services that meet your business requirements. Additionally, use the setup assistant for basic setup and registration, which then upgrades to the latest firmware after completion. To ensure secure administrator access, configure a complex password, change the default admin credentials, and implement sign-in security measures such as inactivity periods and blocked IP addresses.

Sophos firewall configuration step by step. Sophos firewall tutorial pdf. What is sophos firewall. Sophos firewall tutorial in hindi. How to use sophos firewall. Sophos xg firewall tutorial. Is sophos firewall free. Sophos xg firewall home edition tutorial. Sophos firewall home edition. Sophos firewall rules. Sophos firewall setup. Sophos home firewall setup.